

## Specifications

### General

Configuration:	Console with standard ARDF
Printing Processing:	4 way Laser Diode Array & Electro-photographic printing Dry, dual-component
Scanning Element:	4 channel CCD
Originals:	Sheet/Book
Original Size (Platen):	Maximum A3
Warm-up Time:	Less than 480 seconds
First Copy Speed:	4.1 seconds
Copying Speed:	85 cpm
Multiple Copying:	Up to 9,999
Memory:	48 MB x 2 (RAM) 4.3 GB x 2 (HDD)
Original Feeding:	Standard ARDF
Stack Capacity:	100 sheets
Original Size (ARDF):	Maximum A3 (420 x 297 mm) Minimum A5 (210 x 154 mm)
Original Weight:	40 - 156 g/m <sup>2</sup>
Scanning Speed:	72 A4 originals per minute
Resolution:	600 dpi
Grey Scale Scanning:	256 levels
Paper Size:	Minimum A5 Maximum A3
Paper Weight:	52 to 216 g/m <sup>2</sup> (Simplex) 64 to 163 g/m <sup>2</sup> (Duplex)
Paper Capacity:	
Maximum Capacity:	7,550 sheets
Tandem Tray:	2 x 1,000 sheets
Tray 2 and 3:	500 sheets
Tray 4 and 5:	1,000 sheets
Tray 6:	2,550 sheets
Magnification Ratios:	
Enlargements:	115, 122, 141, 200, 400%
Reductions:	93, 82, 75, 71, 65, 50, 25%
Zoom Range:	25 to 400% in 1% steps
Power Consumption:	Maximum 3 kW (Full system)
Dimensions (W x D x H):	2,218 x 735 x 1,476 mm (Full system)
Weight:	390 kg (Full system)

### Finisher SR810

Output Capacity:

**RICOH**

Image Communication Home Page: <http://www.ricoh-europe.com>

Proof Tray:	500 sheets
Shift Tray:	3,000 sheets
Stapling:	100 sheets maximum 4 different positions (Top, top slanted, bottom, 2 in middle)
Punching (Option):	2 holes, 4 holes, 4 holes Swedish style

### Other Features

APS/AMS	
Auto Paper Tray Switching	
Stamp Features:	Page Numbering, Preset Stamps, User Stamps, Date Printing
Erase Centre/Border	
Margin Adjustment	
Image Shift	
Centring	
Booklet and Magazine Mode	
Auto Start	
Sample Set	
Job Preset (Up to 10 jobs)	
User Program:	25 programs

### Printer Module

Print Speed:	85 ppm
Resolution:	
PCL6:	600 dpi (1,200 dpi enhanced)
PostScript® 3™:	600 dpi
Print Language:	
Standard:	PCL6 (5e + XL)
Option:	Adobe® PostScript® 3™
PCL Driver OS:	Windows® 95, 98, NT4.0
PS Driver OS:	Windows® 95, 98, NT4.0, Macintosh®
Font:	PCL6
Memory:	
Standard:	32 MB
Option DIMM:	up to 128 MB x 2
Interface:	Parallel Port (IEEE 1284) Network Port (For option NIC)
NIC:	Ethernet 100/10 Base T (Option)
Network Protocol:	TCP/IP, IPX/SPX, Apple Talk
HDD:	Printer HDD (Option)

### Options

Copy Connector Kit Type 850
CD-R/W (Reader/Writer)
Interface Board 850
A3 Large Capacity Kit
2-hole Punch
4-hole Punch
4-hole Punch (Swedish style)



Ricoh has determined that this product meets the ENERGY STAR guidelines for energy efficiency.

Ricoh has been granted a certificate of ISO 9001, which is the International Standard for Quality Systems.

Ricoh believes in conserving the earth's precious natural resources. This brochure is printed on environmentally friendly paper.

All brand and product names are trademarks of their respective owners.

Specifications and external appearance are subject to change without notice. The colour of the actual product may vary from the colour shown in this brochure.

Aficio™ 1085

Aficio™



Digital, the Future of High Volume  
Copying and Printing

**RICOH**  
Image Communication

# The Digital Revolution

Ricoh sets a new standard for high-volume production with the Aficio™1085! As the first digital high-volume copier in this class, the Aficio™1085 outperforms all current analogue high-volume copiers. Designed for continuous throughput, this revolutionary machine reaches unbelievable levels of productivity!

The Aficio™1085 produces an amazing 85 A4 pages per minute. Thanks to the copy connector kit, you even have the option to link two Aficio™1085s for an incredible output speed of 170 ppm! Moreover, this powerful copier can be turned into a high-volume printer by adding the optional printer controller.

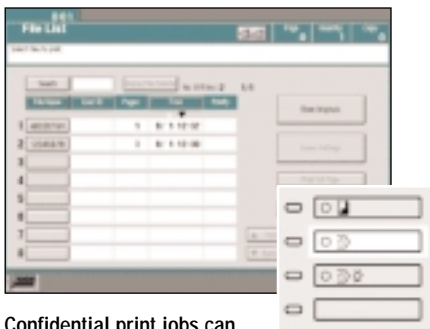
The Aficio™1085 is not only fast and multifunctional, it also offers the advantages of real digital technology. Original documents are stored into memory from where they can be reproduced as often as you like. The quality is always first rate. To top it all off, the Aficio™1085 is equipped with a number of production features so you can create professionally finished documents in one uninterrupted flow.

A perfect combination of real digital technology and non-stop high-volume performance, the Aficio™1085 offers the best of both worlds.



# Striking High-quality Printing

The Aficio™1085 is not only unique as a high-volume copier. If you opt to have the printer controller installed, it also becomes an incredibly powerful network printer with all the benefits of a high-volume copier. You can save time by sending your large print job straight from your PC to the Aficio™1085. You can either print directly or store your job in the Document Server to print at your convenience. In addition you can store data on the optional CD-R/W for later retrieval.



Confidential print jobs can be sent, password-protected, to the Document Server.



## Peak Printer Performance

Printing at the amazing speed of 85 ppm, the Aficio™1085 is perfect for your high-volume print jobs. After sending your job from your PC, the highly efficient printer controller starts printing while ripping. This feature will enhance your workflow, especially when you regularly print large files. Whether you are printing single or double-sided, with or without finishing options, the speed will always be the same. The printer controller of Aficio™1085 supports PCL6 as a standard and PostScript® 3™ as an option, so it can easily translate your files into crisp and clear printed output. Thanks to a standard resolution of 600 dpi, the Aficio™1085 always delivers immaculate results, even for the largest jobs.

## Merge Copy and Print Jobs

You can now collect data from different sources and integrate them into one document. Thanks to the Document Server of the Aficio™1085 you have the option to combine print files and hardcopy originals into one document. Simply scan the pages you would like to include in your document and merge these in the Document Server with the print job you have sent from your PC. That way you obtain a completely tailor-made document, updated with the latest available information.

## Secure Printing in Document Server

If you do not want to run the risk of other people viewing or taking your prints, you can send your documents to the Document Server and protect them with a password. It is as easy as sending the job directly to the printer engine, but with the difference that you decide when

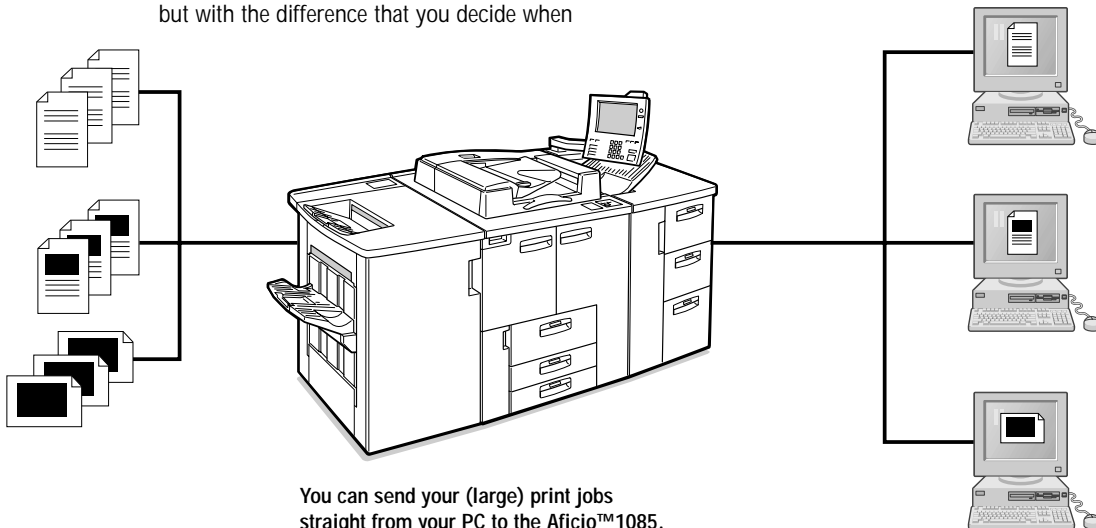
the job will be printed. As access is not possible without password, your confidential information will remain confidential.

## Expanded Storage

The optional CD-R/W drive on the Aficio™1085 functions as an expansion of the Document Server memory. You can save up to 50 files or 500 pages directly on a CD-R/W disk and retrieve them for printing at your convenience. This option adds virtually unlimited memory capacity to your Aficio™1085.

## Bundled Network Printer Utilities

A comprehensive package of printer management software comes bundled with the optional printer module. The Aficio™ Manager software for instance, will allow you to monitor and control the operational status of your network's printing activities. From prioritising print runs to checking paper supplies, all essential in-progress information can be accessed instantly from your desktop via a practical task bar interface. With Aficio™ Manager you can enjoy the benefit of easy management of your network printers in a user-friendly package. In addition, the driver also includes PortNavi™, a port status monitor software with Direct Print functionality, Recovery Printing functionality and Parallel Printing functionality to notify users when an error occurs to any of the network printers. The optional Network Interface Board is needed to connect the Aficio™1085 to all major network environments. In addition the Network Interface Board includes MAP (Management Access Program) software.



You can send your (large) print jobs straight from your PC to the Aficio™1085.

# Surprising Ease of Operation

Whether you are a frequent user or just want a one-off copy, no one has the luxury of spending hours trying to figure out how to operate a machine. That is why the Aficio™1085 is designed to make life easy for you. It will only take you a few seconds to programme your job, while replacing consumables and paper is child's play. The user-friendliness of the Aficio™1085 will not only save you time and frustration, it will also inspire you to use its most advanced functions.

## Large Touch Screen Panel

Thanks to the large and logically organised touch screen, programming jobs on the Aficio™1085 is very straightforward. All settings can be made and viewed in one screen. Keys are large and logically organised. For multilingual organisations, the Aficio™1085 has a unique function, enabling the user to switch between two languages at the touch of a button. A clearly visible green/red light on top of the panel indicates what the machine is doing at all times. This comes in handy when you are otherwise engaged and not in front of the copier. Though the Aficio™1085 is designed for trouble-free operation, you will immediately be alerted by the red light should the machine go off-line. This way you can even supervise the machine from a distance.

## Amazing Autonomy

With traditional copiers you have to stay close to the machine if you want your jobs to be done one after the other, as each job has to be fed separately. The digital Aficio™1085, however, makes your life much easier. You simply scan all your jobs and set the Aficio™1085 to work. Thanks to the automatic start function on the Aficio™1085, there is no need to press the start button for every job. Just let the machine take over until the last set of the last job is done. With its Original Recognition function, the copier/printer immediately recognises the size and orientation of your original, and selects the right media, so preventing miscopies. Moreover, the Aficio™1085 automatically switches paper trays when one is empty. That way there is no reason at all to stop the flow of production and you do not have to stay by the machine. The Aficio™1085 takes care of everything.



# ... to Non-stop Productivity

The Aficio™1085 has been designed with the Print Room in mind. The most important thing you want from a high-volume copier/printer is hassle-free and uninterrupted output of high-quality prints. The Aficio™1085 fully supports this need.

With its "Scan Once, Print Unlimited" technology for instance. Moreover, new jobs can be scanned while the machine is in full production. Paper is in abundant supply and can be added while copying.

Copied sets can be removed from the Finisher, while the machine continues producing 85 prints per minute.

With Ricoh's Aficio™1085, your Print Room will reach productivity levels you could only have dreamed of!

## Scan Once, Print Unlimited

The Aficio™1085 has Ricoh's unique "Scan Once, Print Unlimited" technology. Thanks to this breakthrough technology each original needs to be scanned just once while output quantity is virtually unlimited. So you do not have to replace or reset originals during large jobs to maintain high-quality output.

## Large Job Feeding

The Auto Reverse Document Feeder takes up to 100 sheets of either single or double-sided originals. 100 sheets will not always be enough, however, which is why the Aficio™1085 is equipped with the Batch Mode. This allows you to scan in documents of up to 1,000 originals in the memory and copy them as one set. That is what Ricoh calls Print Room productivity!

## Scan-while-printing

Up to 10 new jobs can be scanned and programmed for immediate production while the machine is printing. After scanning the different documents into memory you can leave the Aficio™1085 to handle the job and do something else in the meantime, or start collecting the output for further processing. Either way, your print room productivity will significantly increase.

## Continuous Paper Supply

The Aficio™1085 can complete even the longest copy jobs in one smooth run. With an amazing standard input capacity of 7,550 sheets, this copier is the ideal solution for your high-volume requirements. Paper is available from 6 different trays. The system switches to the next tray automatically when the current one runs out of paper. All trays can be refilled during copy jobs, so production never stops.

## Unlimited Toner Supply

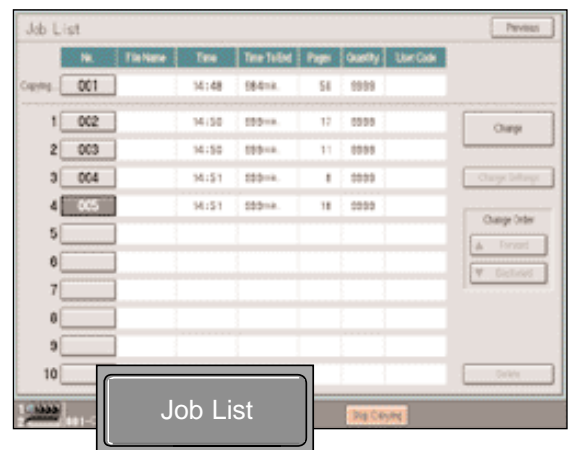
Besides a continuous paper supply, the Aficio™1085 is also equipped with two high-yield toner bottles for more than 100,000 uninterrupted prints. Just one bottle will last you a very long time. As there are two, however, the copier/printer switches automatically to the other when the first is empty. You do not even have to interrupt your workflow to replenish toner. While you change one bottle, the Aficio™1085 is already making use of the other.

## Infinite Output

As a standard, the Aficio™1085 is equipped with a large-capacity Finisher of 3,000 sheets. Sets can be removed while the machine is in full operation, so there is always space for more. That is real non-stop productivity!



7,550-sheet capacity from six different paper stations.



The Job List allows you to view jobs that have already been scanned or change their priority.



# Outstanding Quality

You may already have a highly productive copier. It probably produces high-quality output. Up to a certain point. But does it go the distance when you are producing over 100 sets? One thing is certain, you want a copier that is not only fast, but also guarantees the same superb quality performance from the first to the last set, no matter how many you print. The Aficio™1085 is the digital answer to your problem.

## No Generation Copies

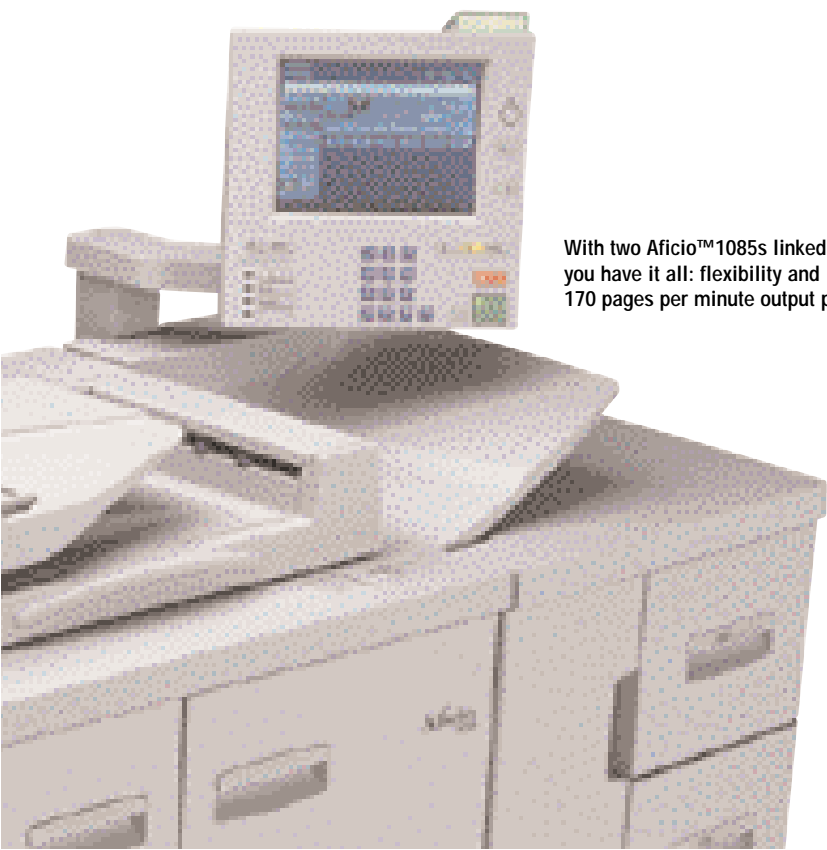
Thanks to Ricoh's digital technology, the Aficio™1085 offers high-quality input and output. This digital copier scans originals just once and stores them into memory, from where they are reproduced as often as you want. An innovation that makes Recirculating Document Handlers obsolete. As originals are scanned only once, the risk of damage from recirculative feeding is eliminated. This will save you the time and cost of having to make master copies from your originals first. Moreover, because all subsequent prints are produced from memory, the quality will remain the same throughout the whole job, whether you are making 5 or 5,000 sets.

## Stable Quality Output

Equipped with Ricoh's advanced image processing technology, the Aficio™1085 never fails to deliver superb and stable output quality. It prints and copies at up to 1,200 dpi resolution, producing crisp and clear copies that look exactly like your originals. Moreover, no matter what kind of paper you are printing on, whether plain white, colour, transparent or thick, the quality of print is always immaculate.

## Different Original Modes

Thanks to its digital technology, the Aficio™1085 can copy from any kind of original. There is no need to "prepare" your documents first, as is often the case with analogue copiers. To further ensure immaculate output of all types of originals, the Aficio™1085 has a variety of original modes. For text documents or originals combining image and text, the Text or Text/Photo mode will provide the best results, while Photographic originals are best copied in Photo mode. In case of lighter originals the Pale mode will offer the most accurate results.



With two Aficio™1085s linked you have it all: flexibility and 170 pages per minute output power!



Thanks to digital technology, all output from the Aficio™1085 has the same high quality.



# From 100% Productivity ...

In a Reproduction environment, you have no time to waste. You need everything in quantity and you need it fast! The Aficio™1085 offers a record scanning speed and ultra fast printing. No matter what type of job you require, whether simplex or duplex, with or without staples, or punched holes, the Aficio™1085 always delivers at 85 ppm!

## Fast Scanning/Printing

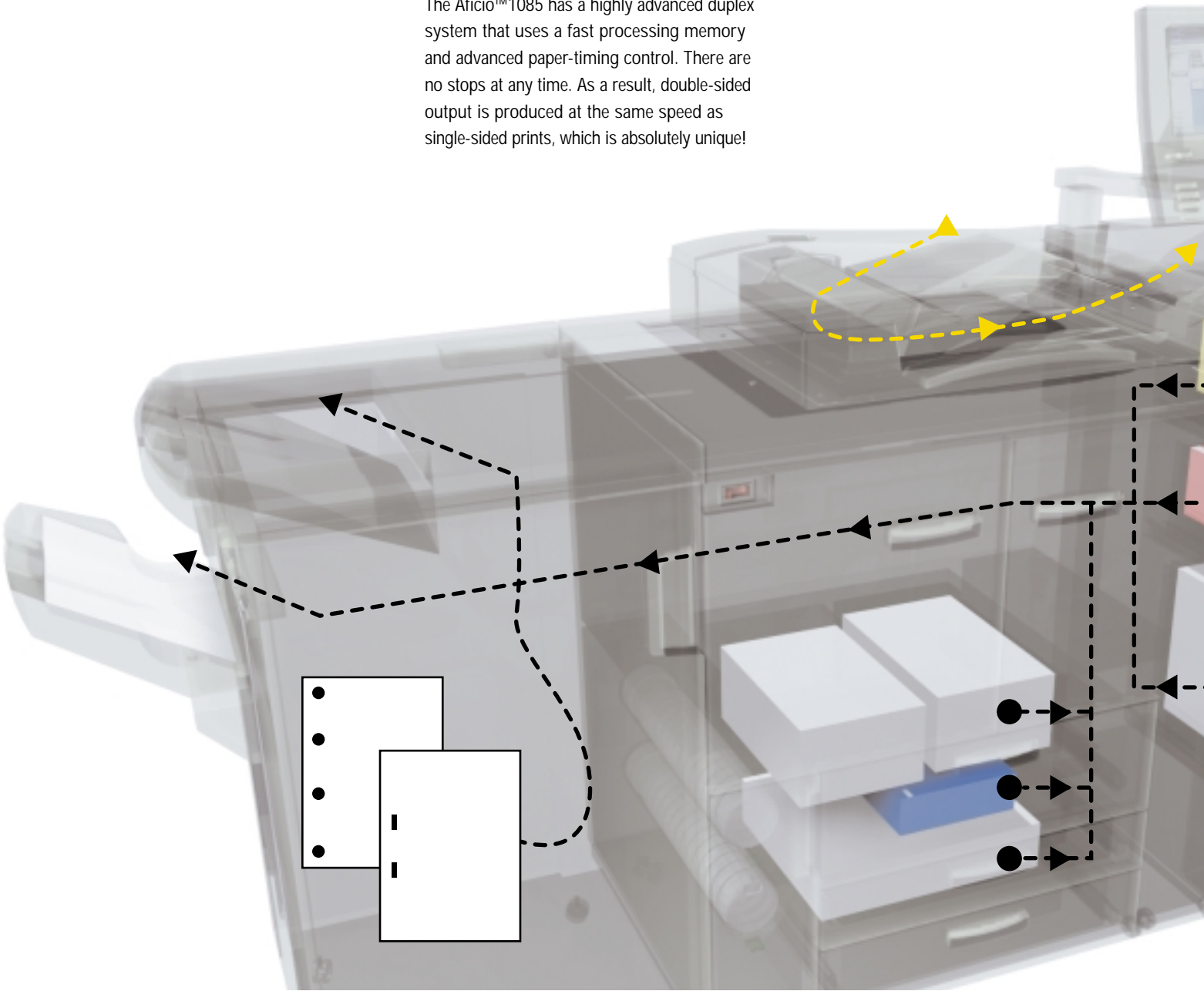
Digital is the key to the Aficio™1085's superiority. It scans documents at an amazing speed of 72 opm at 600 dpi and 256 greyscales. Originals are scanned once and stored into the Aficio™1085's memory. They can be reproduced as many times as you want. This innovation makes Recirculating Document Handlers a thing of the past. Why suffer the problems of recurrent feeding, damaged originals, diminished quality, and continuous noise? With a continuous speed of 85 copies/prints per minute, the Aficio™1085 delivers fast, top-quality output from a single pass!

## 100% Duplex Productivity

In high-volume environments, copying from simplex to duplex is a common task. Maintaining speed is therefore essential. The Aficio™1085 has a highly advanced duplex system that uses a fast processing memory and advanced paper-timing control. There are no stops at any time. As a result, double-sided output is produced at the same speed as single-sided prints, which is absolutely unique!

## Speedy Stapling and Punching

The Aficio™1085 Finisher is designed to maintain 100% productivity. When one document is being stapled the next is being processed in a separate path. As a result, the Aficio™1085 does not lose speed, even when you want to finish your sets with a staple. The optional punch unit is also designed to have no effect on productivity. The Aficio™1085 produces all documents in one continuous flow at 85 ppm.



## Easy-to-replace Paper and Consumables

The Aficio™1085 has ample paper and toner capacity. However, if paper has to be replenished or a toner bottle replaced, it will be a piece of cake for any user. The staple station in the Finisher is also easily accessible from the front of the machine. This makes replenishment of staples simple and straightforward.

## Swift Recovery

Designed for non-stop high-volume productivity, the Aficio™1085 is one of the most reliable copiers/printers you will find on the market. Should a problem occur, it will take only seconds to resolve. The location of any jammed paper will be clearly indicated on the LCD screen. Once you have removed the paper, the machine automatically resumes printing, exactly where the job was interrupted. As originals have been scanned into memory, you do not have to waste time feeding them again.

## Remarkably Low Operation Noise

For such a powerful machine, the Aficio™1085 is remarkably quiet. Thanks to its Real Digital technology combined with the on-line Finisher, Ricoh has eliminated noisy Recirculating Document Handlers and sorter bins. With the Aficio™1085 you have even more document handling options at your disposal, but it makes far less noise. As a result, your work environment will be less stressful and therefore more agreeable.



Large touch screen, with big buttons for easy job programming.



Replacing toner bottles is a piece of cake for any user.

# Professional Finishing

Professional finishing capabilities are a must nowadays. The Aficio™1085 offers a wide variety of extremely productive finishing options. You can punch, staple, and use up to 5 different kinds of paper in one job. With this unique combination of finishing features the Aficio™1085 will create truly professional documents for you.



The Finisher not only has a huge 3,000-sheet capacity; sets can also be removed during copying/printing.



By copying onto the tab you know what subject is under each tab.

## On-line Stapling and Punching

The Aficio™1085 comes ready equipped with a highly advanced Finisher with 3,000-sheet capacity. The Finisher allows you to finish your documents professionally with 1 or 2 staples in 4 different positions. What is unique is that even documents of up to 100 sheets can be stapled as one set! Depending on your requirements, you can also opt to have either a 2-hole or 4-hole puncher installed. With the Aficio™1085, hole drilling is a thing of the past.

## Magazine Mode

With the Aficio™1085 you can easily make your own booklets. If you select Magazine mode, you can make an A4 or A5 size magazine from single- or double-sided originals. Magazine mode automatically makes a professional booklet from your originals. Making high-quality booklets has never been easier.

## Cover Mode

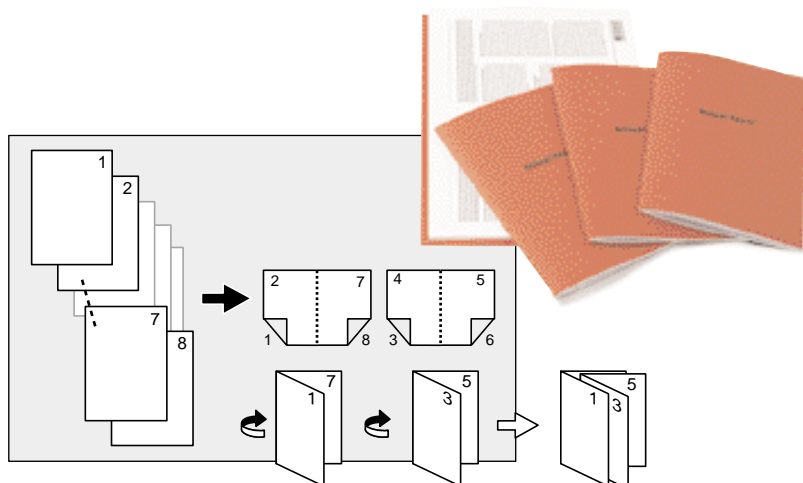
Thanks to Cover mode on the Aficio™1085, you can add the perfect finishing touch to your copy sets. You can add a front cover, back cover, or both, and create professionally finished documents. You can even choose between blank and copied covers.

## Slip Sheet/Chapterisation

With Slip Sheet you can create neatly organised documents by separating the different sections with a divider page in another colour. Even creating an appendix in your document is possible and very easy to program. The Chapterisation function on the Aficio™1085 will make sure that if you are printing from simplex to duplex, each first page of a chapter is on the right hand side.

## Tab Sheet Insertion

The Aficio™1085's paper path is designed in such a way that it can effortlessly support the heaviest kinds of paper, including tab sheets. This feature will save you a lot of time otherwise spent on manual insertion. By adding a tab sheet you can clearly see where the next chapter starts. With the Aficio™1085 you cannot only add tab sheets, you can even print on the tab!



In magazine mode you can easily create professional A5 or A4 booklets.

# ... for All Your High Volume Requirements

High Volume copiers are used in various environments, each with their own specific needs. Ricoh's High Volume design team took up the challenge to develop a machine that will satisfy the needs of these different environments. In the central reproduction environment with professional and well-trained specialists, top quality, maximum productivity and reliability probably are the most important requirements. For a central departmental copier with many different users, speed, quiet operation, reliability and ease of use are often the main characteristics when selecting a copier/printer. With the Aficio™1085, Ricoh delivers one machine that supports the needs of both environments.

## Meeting Print Room Standards

The Aficio™1085 fits perfectly in your Print Room. In this demanding work environment, you need professional quality at all times. The Aficio™1085 not only offers a resolution of up to 1,200 dpi and 256 grey scales for superb output, generation copies also become a thing of the past with Ricoh's unique "Scan Once, Print Unlimited" technology. To maximise Print Room productivity the Aficio™1085 has been designed to work without interruption. Set new jobs, remove copies from the finisher, add toner and/or paper; the copier never misses a beat. When your print room requires a combination of flexibility and high output capacity, simply link two Aficio™1085s for a combined output speed of 170 pages per minute. If you add the optional Print Controller you can even print to both from the network. With the Aficio™1085, your Print Room is ready for the future!

## Fits Large Departments

The Aficio™1085's capacities reach even further. This digital copier/printer will also function perfectly as a multi-user copy/print station for large workgroups. To ensure that the machine can be used by anybody, the large touch panel display has been designed with large buttons, making job settings for any type of job a piece of cake. Thanks to the high output speed of 85 A4s per minute, jobs will be ready in an instant. Moreover, Ricoh's "Scan Once, Print Unlimited" technology eliminates the noise of Recirculating Document Handlers, and also offers a new level of reliability not found with conventional analogue machines. The Aficio™1085 will not only increase your organisation's productivity; it will also put the smile back on your staff's face.

